



3 Heath Road, Salisbury, Wiltshire, SP2 9JS

£1,400 PCM

About The Property

A spacious, unfurnished, three bedroom semi-detached house situated in a popular location with large garden and off road parking.

Accommodation comprises:

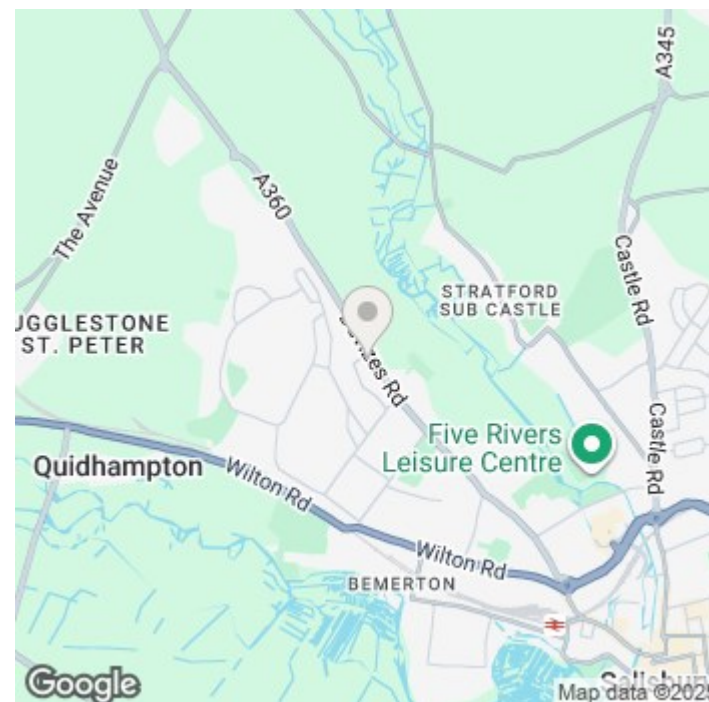
Open porch. Entrance hall with large under stairs cupboard and cloakroom. Sitting room with bay window and open archway to a dining room with feature brick fireplace and patio doors onto the garden. Modern fitted kitchen with electric oven and hob, space for a fridge/freezer and washing machine; door to garden.

Upstairs; bedroom one, double with bay window and fitted wardrobe. Bedroom two, to the rear with fitted wardrobe. Family bathroom with thermostatic shower over the bath. Bedroom three, single.

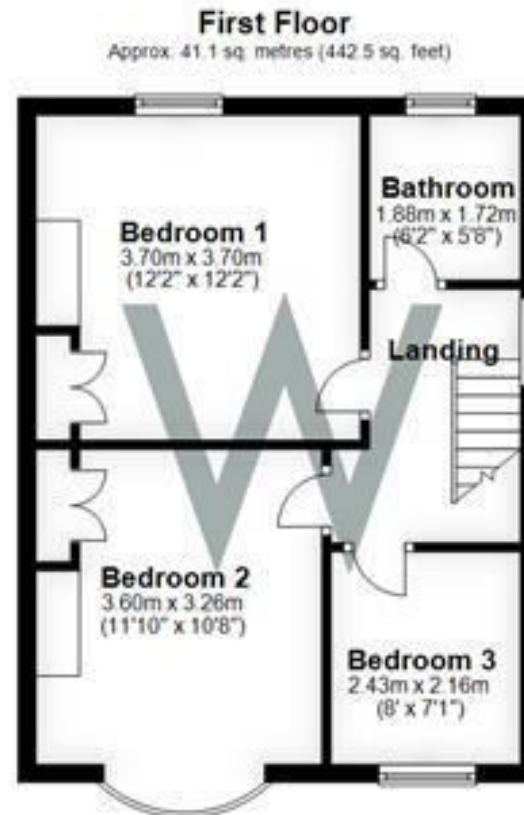
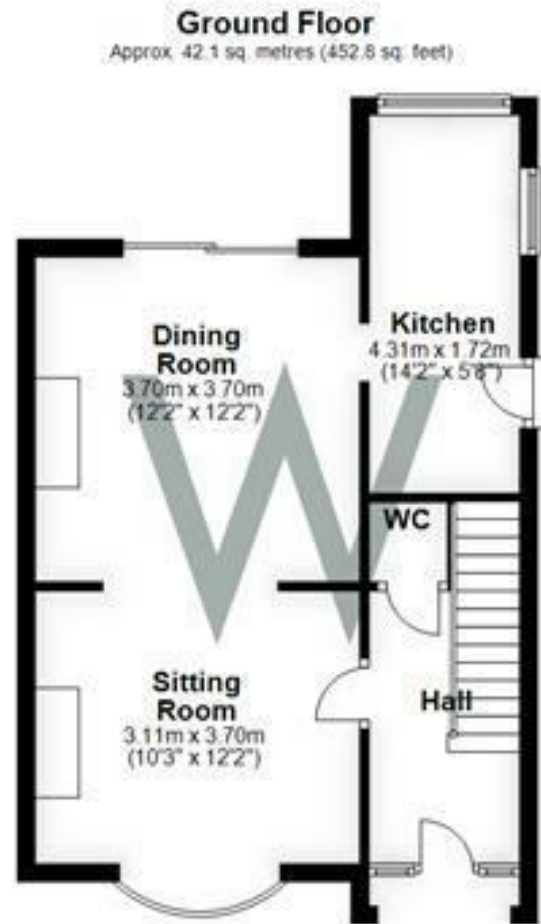
Outside; large enclosed rear garden with patio area and large storage shed. Parking on the driveway.

The property is offered unfurnished and benefits from gas central heating, double glazing and is an EPC Band C.

- Semi-detached family home situated in a popular residential location.
- Two reception rooms.
- Modern fitted kitchen.
- Downstairs cloakroom.
- Two double bedrooms and one single.
- Bathroom with shower over the bath.
- Large enclosed rear garden.
- Large storage shed.
- Off road parking on the driveway.
- Gas central heating and double glazing.







Total area: approx. 83.2 sq. metres (895.3 sq. feet)
3 heath road

Further Information

Let available date: 5th December 2025 NB: This date is provisional and will only be confirmed once referencing has been successfully completed.

Property type: House - Semi-Detached

Furnish type: Unfurnished

Deposit: £1,615

Local authority: Wiltshire Council

Council Tax: Band D

EPC: C(71)

Energy Efficiency Rating

	Current	Potential
Very energy efficient - lower running costs		
(92 plus) A		
(81-91) B		85
(69-80) C	71	
(55-68) D		
(39-54) E		
(21-38) F		
(1-20) G		
Not energy efficient - higher running costs		
England & Wales	EU Directive 2002/91/EC	